



**St. Peter's  
Institute of  
Pharmaceutical Sciences**

#2-4-1211, Vidyanagar, Hanamkonda, Telangana -  
506001 India

**Website:** [www.stpeters.co.in](http://www.stpeters.co.in),

**Email :** [spipswgl@gmail.com](mailto:spipswgl@gmail.com)

## **s NEWS LETTER OF CLINICAL PHARMACY**

**VOLUME-3, ISSUE-4, OCTOBER-NOVEMBER2020**

**Chairman : Shri.T.Jayapal Reddy**

**Principal : Dr.P.Rajasheker**

**Head of the Department: Dr.B.Suresh**

**Editor : Ms.Shivani Ravula**

**Associate Editors : Dr.G.Dharani, Sahaja, G.Vennela**

**Student Editors: VasikarlaSnehaVarshini, Cheeti madhuri, Hari Esuram, Sandesh  
Kumar**

### **Vision**

St.Peter's is committed to generate, disseminate and preserve knowledge and work with pioneers of this knowledge, and to be the most sought after institute globally in the field of pharmaceutical sciences by creating world class pharmacy professionals and researchers.

### **Mission**

To achieve academic excellence with integrity and creating opportunities for leadership and responsibilities through groundbreaking performance in the field of Pharmaceutical Sciences by educating students with pharmaceutical needs of the society and to advance the knowledge through research and to serve the profession and community.



## INFORMATION ON COVID-19 (October to December)

### **COVID-19 updates October 2020**

- US FDA approved 2 generic drugs indicated to facilitate tracheal intubation and also to provide skeletal muscle relaxation during surgery or mechanical ventilation.
  - Succinylcholine chloride injection(USP) 200mg/10ml and Cisatracuriumbesylate injection USP 10mg/5ml.
1. Around the world, we're now seeing an increase in the number of reported cases of COVID-19, especially in Europe and the Americas.
  2. There has been some discussion recently about the concept of reaching so-called "herd immunity" by letting the virus spread.

### **November 2020 updates:**

In the daily bulletin, it said that the active COVID-19 cases in country stand at 4.53 lakh, while 88.02 lakh people have recovered from the disease so far.

### **PFIZER AND BIONTECH ANNOUNCE VACCINE CANDIDATE AGAINST COVID-19 ACHIEVED SUCCESS IN FIRST INTERIM ANALYSIS FROM PHASE 3 STUDY**

### **December 2020 updates:**

The United States closed out 2020 with the deadliest and most infectious month since the start of the coronavirus pandemic, while surpassing 20 million confirmed Covid-19 cases.

More than 77,000 people lost their lives in December to Covid-19, while 6.4 million contracted the virus amid the emergence of a new virus variant and delayed efforts to vaccinate people.

## FDA APPROVED DRUG LIST(OCTOBER – DECEMBER, 2020)

<b>Drug name</b>	<b>Company name</b>	<b>Approval date</b>	<b>Indication</b>	<b>Mechanism of Action</b>	<b>Precautions</b>	<b>Complications</b>
<b>Inmazeb</b>	Regeneron pharmaceuticals	10/14/2020	To treat ebola virus	The antibodies bind to glycoprotein, blocking its attachment to cell receptors and preventing entry of the virus into the cells.	Hypersensitivity Reactions Including Infusion-Associated Events Pregnancy Lactation	Fast heart rate, fast, shallow breathing, vomiting, Low blood pressure diarrhea, and low blood oxygen ( <u>hypoxia</u> ).
<b>Oxlumo</b>	Alynham pharmaceuticals	11/03/2020	To treat hyperoxaluria type1	Reduces levels of glycolate oxidase by targeting the hydroxy acid oxidase 1 mRNA in hepatocytes through RNA interference.	Pregnancy, lactation, dialysis	Injection site reaction Abdominal pain

<b>Gallium-68 PSMA-11</b>	Telix pharmaceutical	12/01/2020	For detection and localization of prostate cancer	It binds to cells that express prostate-specific membrane antigen (PSMA), including malignant prostate cancer cells, which usually overexpress PSMA.	Risk for misdiagnosis and radiation	No serious complications are reported
---------------------------	----------------------	------------	---	--	-------------------------------------	---------------------------------------

### APA GUIDELINES FOR SCHIZOPHRENIA (Sep. 1, 2020)

The American Psychiatric Association (APA) released new evidence-based guideline to enhance the treatment.

Goals : Reduce mortality, morbidity and consequences of psychiatric condition.

#### **Assessment and Determination of Treatment Plan**

1. APA *recommends (1C)* that the initial psychiatric evaluation of a patient with a possible psychotic disorder include a quantitative measure to identify and determine the severity of symptoms and impairments of functioning that may be a focus of treatment.
2. APA *recommends (1C)* that patients with schizophrenia have a documented, comprehensive, and person-centred treatment plan that includes evidence-based nonpharmacological and pharmacological treatments.

#### **Pharmacotherapy**

1. APA *recommends (1A)* that patients with schizophrenia be treated with an antipsychotic medication and monitored for effectiveness and side effects.

This guideline statement should be implemented in the context of a person-centred treatment plan that includes evidence-based nonpharmacological and pharmacological treatments for schizophrenia.

2. APA *recommends (1A)* that patients with schizophrenia whose symptoms have improved with an antipsychotic medication continue to be treated with an antipsychotic medication.
3. APA *suggests (2B)* that patients with schizophrenia whose symptoms have improved with an antipsychotic medication continue to be treated with the same antipsychotic medication.
4. APA *recommends (1B)* that patients with treatment-resistant schizophrenia be treated with clozapine.

5. APA *recommends (1B)* that patients with schizophrenia be treated with clozapine if the risk for suicide attempts or suicide remains substantial despite other treatments.

### Psychosocial Interventions

1. APA *recommends (1B)* that patients with schizophrenia who are experiencing a first episode of psychosis be treated in a coordinated specialty care program.
2. APA *recommends (1B)* that patients with schizophrenia be treated with cognitive-behavioural therapy for psychosis (CBTp).
3. APA *recommends (1B)* that patients with schizophrenia receive psychoeducation.
4. APA *recommends (1B)* that patients with schizophrenia receive supported employment services.

### MONOGRAPH ON FLUOXETINE

- **Pharmacological class:** Selective serotonin reuptake inhibitor (SSRI)
- **Therapeutic class:** Antidepressant

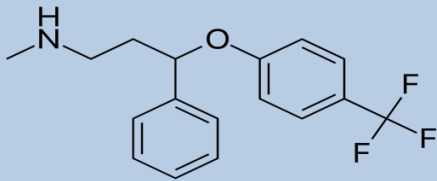
#### Available Dosage Forms:

#### Oral:

- Capsule: 10mg, 20mg, 40mg
- Capsule, Delayed Release: 90mg
- Solution: 20mg/5ml
- Syrup: 20mg/5ml
- Tablet: 10mg, 20mg

**Drug name (generic or active ingredient name):** Fluoxetine

#### Structure:



**Chemical name:** N-methyl-γ-[4-(trifluoromethyl) phenoxy] benzenepropanamine

**Molecular weight:** 309.33 daltons

#### Mechanism of Action:

Acts by inhibition of serotonin uptake in neurons of the CNS which results in anti-depressive, antibulimic and anti-obsessivecompulsive properties.

#### Specific Population:

**Pediatrics:** Depressed bipolar I disorder, In combination with olanzapine

10 to 17 Years: 20 mg orally OD in the evening in combination with olanzapine 2.5 mg.

Major depressive disorder

8 Years or Older: 20 mg orally once daily, in the morning

**Pregnancy:** Increased chances for premature delivery, low birth weight and length, increased risk for pulmonary hypertension.

**Breast feeding:** Unknown (Some short-term adverse effects have been reported, including colic, seizures, irritability, withdrawal symptoms, and cyanosis).

**Renal impairment:** No dose adjustment

- Only 2.5% to 5% of an oral dose of fluoxetine is excreted unchanged in the urine, with 10% appearing as the active metabolite(norfluoxetine).

**Elimination Half Life**

- 4 days to 6 days
- liver cirrhosis: 7.6 days mean
- Norfluoxetine: 9.3 days
- Norfluoxetine, liver cirrhosis: 12 days mean

**Adverse Drug Reactions:**

- Nausea, Diarrhea, Loss of appetite
- Asthenia, Dizziness, Insomnia, Tremor
- Anxiety
- Pharyngitis
- Influenza-like symptoms

**CARCINOID SYNDROME**

**Definition:**

Carcinoid syndrome occurs when a rare cancerous tumor called a carcinoid tumor secretes certain chemicals into your bloodstream, causing a variety of signs and symptoms. A carcinoid tumor, which is a type of neuroendocrine tumor, occurs most often in the gastrointestinal tract or the lungs.

**Management:**

Octreotide (a somatostatin analogue which decreases the secretion of serotonin by the tumor and, secondarily, decreases the breakdown product of serotonin (5-HIAA))

Telotristat ethyl (Xermelo) along with a somatostatin analogue in patients not responding to somatostatin analogue monotherapy.

Peptide receptor radionuclide therapy (PRRT) with lutetium-177, yttrium-90 or indium-111 labelled to octreotate is highly effective.

Methysergide maleate (anti-serotonin agent but not used because of the serious side effect of retroperitoneal fibrosis)

Cyproheptadine (an antihistamine drug with anti-serotonergic effects).